

APPENDIX A

LEGEND / NOTES.

- Notes:**
- This drawing is to be read in conjunction with all other relevant CONWAY AECOM engineering drawings.
 - All road markings and signs are to be installed in accordance with the DfT Traffic Signs Manual - Chapter 5: 2003.
 - All road markings and signs are to be in accordance with the Traffic Signs and Regulations and General Directions (TSRGD) 2016.
 - All proportions and form of letters, numerals, and other characters are to be in accordance with Schedule 13 of the TSRGD.
 - Double yellow/red lines to be offset a minimum of 250mm from kerb edge.
 - All street furniture except lighting columns should be set a minimum of 450mm from the kerb face.
 - Road markings shall be installed using reflectorised paint in accordance with regulation 31 of the TSRGD.
 - Refer to SSDM/TDR drawing LBS C/030, Detail E (sheet 3 of 3) for surface finishes around sign post bases.
 - Do not scale from drawing.

- Keys:**
- ① Road marking reference
 - RS-1 Reinstall existing street name plate and No Through Road sign on a new post. Refer to Sign Schedule for details.
 - RS-2 Install new Red Route sign on a new post. Refer to Sign Schedule for details.
 - RS-3 Install new parking restriction sign on a new post. Refer to Sign Schedule for details.
 - LC-1 Install new parking restriction sign on lighting column. Refer to Sign Schedule for details.
 - LC-2 Install new Pay at Meter sign on lighting column. Refer to Sign Schedule for details.
 - LC-3 Install new Pay at Meter sign on lighting column. Refer to Sign Schedule for details.
 - LC-4 Install new parking restriction sign on lighting column. Refer to Sign Schedule for details.
 - TfI single red lines - 100mm wide
 - TfI double red lines - 100mm wide, 100mm gap
 - Double primrose yellow lines - 50mm wide, 50mm gap
 - BO New Ferrocast Manchester polyurethane removable bollard with square root and socket by Marshalls or similar approved. To be installed on a F foundation as Volume 2, Annex D, drawing LBS/C/030
 - Proposed 300mm diameter Camberwell Art Trail bespoke "street marker." Location and specifications to be confirmed by LBS.

B	16-03-17	CHANGES TO LC-2 PARKING SIGN, LIGHTING, STREET FURNITURE, AND LANDSCAPING. PROPOSED LEFT TURN ARROW MARKING REMOVED FOLLOWING DEPARTMENT RESOLUTIONS AND RSA	JL	JE	SB
A	07-11-16	DOUBLE RED LINES REMOVED FROM OFF-HIGHWAY SECTION OF WREN ROAD. RS-2 TO USE NEW SIGN. RS-3 MOUNTED ON NEW POST. CHANGES TO FOOTWAYS, TRAFFIC CARPET, CARRIAGEWAY RESURFACING, LANDSCAPE AREAS, AND DRAINAGE FOLLOWING DESIGN QUALITY WORKSHOP	JL	AGB	ABE
REV	DATE	REVISION DESCRIPTION / DETAILS	DRN BY	CHKD BY	APRVD BY

Shaping Southwark's Highways

 160 TOOLEY STREET LONDON SE1P 5LX

PROJECT: CAMBERWELL POCKET PLACES DETAILED DESIGN

 TITLE: SERIES 1200 - ROAD MARKINGS & SIGNS WREN ROAD

 CONTRACT NO: 60343287-C0280 DRAWN: JL

 SCALE: 1:250 @ A3 PURPOSE: CONSTRUCTION DESIGNED: JL

 DRAWING NO: 60343287-C0280-1200-WR CHECKED: ABE

 DATE DRAWN: AUG 2016 DATE ISSUED: 08 SEP 2016

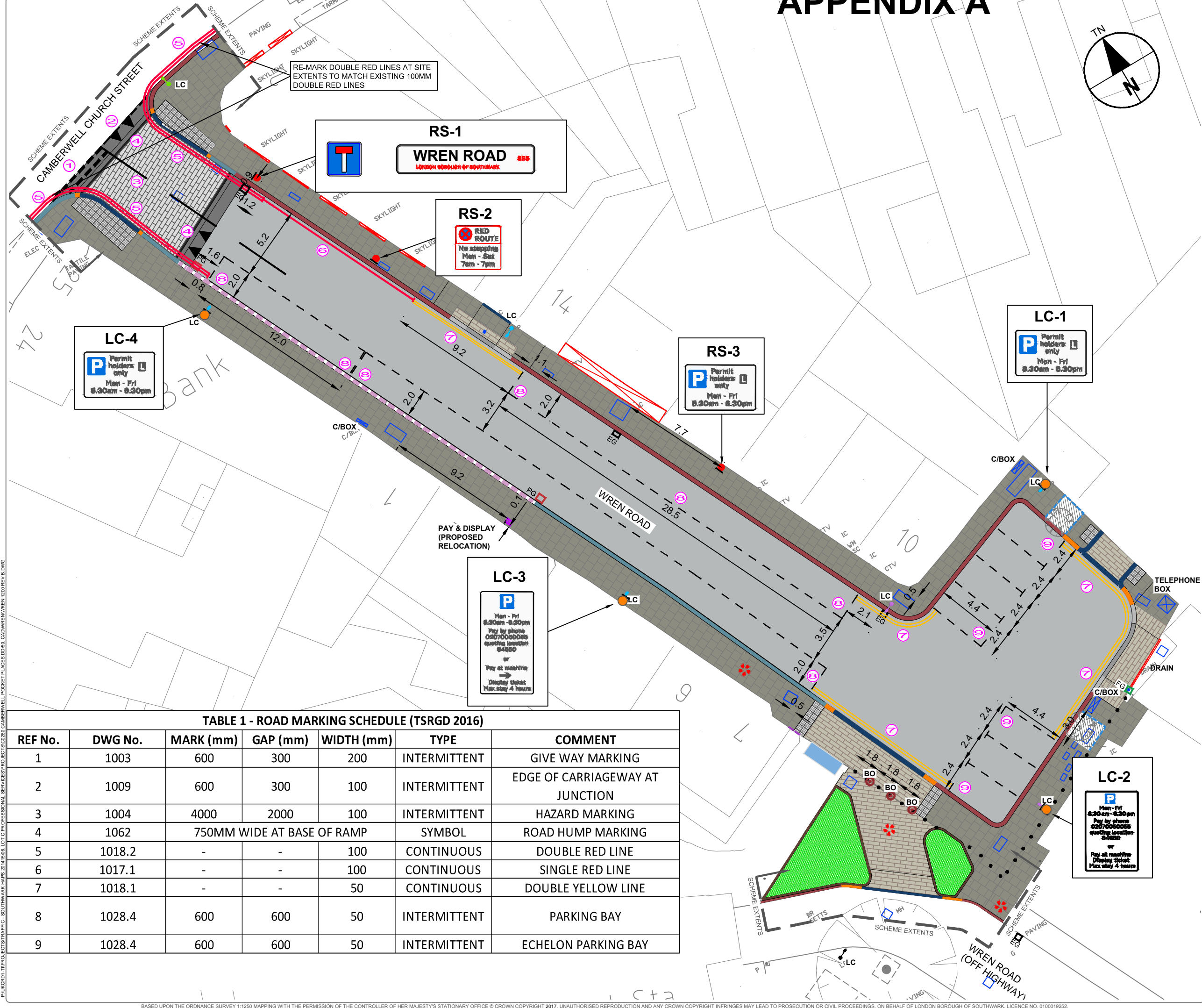


TABLE 1 - ROAD MARKING SCHEDULE (TSRGD 2016)

REF No.	DWG No.	MARK (mm)	GAP (mm)	WIDTH (mm)	TYPE	COMMENT
1	1003	600	300	200	INTERMITTENT	GIVE WAY MARKING
2	1009	600	300	100	INTERMITTENT	EDGE OF CARRIAGEWAY AT JUNCTION
3	1004	4000	2000	100	INTERMITTENT	HAZARD MARKING
4	1062	750MM WIDE AT BASE OF RAMP	-	-	SYMBOL	ROAD HUMP MARKING
5	1018.2	-	-	100	CONTINUOUS	DOUBLE RED LINE
6	1017.1	-	-	100	CONTINUOUS	SINGLE RED LINE
7	1018.1	-	-	50	CONTINUOUS	DOUBLE YELLOW LINE
8	1028.4	600	600	50	INTERMITTENT	PARKING BAY
9	1028.4	600	600	50	INTERMITTENT	ECHELON PARKING BAY